

Vol. 6 No. 3

Crescent, Oklahoma

September 2015

President Sandra Voskuhl
 Vice President Tom Williams
 Secretary Carol Oltmanns
 Treasurer John Anderson

INSIDE THIS ISSUE

<i>We Got Mail</i>	2
<i>Norman Rockwell Plates</i>	2
<i>Knights on Bikes Love Run</i>	3
<i>Crescent Exhibit</i>	3
<i>Notes from Sandra</i>	4
<i>Quarterly Board Meeting</i>	4

EARTHQUAKE SHAKES CRESCENT

In late July, Logan County experienced about 10 earthquakes, all centered in an area about 3 to 4 miles NNE of Crescent.

The big day was July 27 when five earthquakes were recorded and felt in Crescent. Three of these quakes registered above 4.0 with the largest — a 4.5 — causing considerable damage across the Crescent area.

The museum did sustain some damage from this shake up but we were very lucky that the damage was minor. There were quite a number of items knocked off walls and shelves and some glassware was broken. The man-

nequin in the Beauty Shop/Barber Shop fell on the floor as well as a number of items in this display. Considering the size of this earthquake and the number of artifacts on display, we felt fortunate there was not more damage. Inspection of the schoolhouse and the church showed only a few items on the walls needed to be straightened.

Thanks to **Bob and Vickey Howard, Sandra Voskuhl, Mary Ann Beeby and Carol Oltmanns** for cleaning up the damage and putting things back in order in the museum.

CRESCENT PSYCHE-DELIC 5K COLOR RUN - STARTING AT THE MUSEUM

On Saturday, September 26, the Crescent Psyche-delic 5K Color Run began at 10:00 at the museum. This was the second annual Crescent Psyche-delic 5K Color Run and Crescent Arts Festival which benefits the Crescent High School Art Department.

Entrants were encouraged to wear their zaniest costumes as awards were to be given to the racer wearing the most colorful costume. After the race, the festival which was held at the city park included giant inflatables, art activities, artists, performers, BBQ, cotton candy, all kinds of games and fun things for hands on participation and learning

opportunities.

It was an exciting day of fun and educational activities. The museum appreciates the opportunity to have a part in supporting the Crescent High School Art Department and looks forward to hosting the CHS Senior Art Exhibit in March and April of 2016.



WE GOT MAIL!



On July 8, Pioneer Telephone installed internet access at the museum, so we are now able to receive e-mail. **Amy Loch** volunteered to connect the computer and to set up our internet account and e-mail. She has also offered to do the technical work in setting up museum information on our website. We hope to be able to disburse more information about the museum, our activities and programs. We anticipate using this tool, along with packets of information about our museum, to encourage more guests to visit. Social media is a great way to communicate and we would like to have more volunteers with technical skills to

help us spread the word about this treasure we have in Crescent.

We thank **John Anderson** for donating a newer computer for the office and **Amy Loch** for her help and expertise in setting it up for us.

We also wish to thank **Marv Hawkins** for creating and maintaining our website for the past several years.

Please send any comments or input to:
frontiercountrymuseum@gmail.com

Visit our website:
www.frontiercountrymuseum.org

DONATION FROM GARDEN TOUR

Thanks to **Phil and Frances Macy** for the donation of proceeds from their Garden Tour this summer.

The Macy's restored 120 year old pioneer farmhouse and garden walk have been a mainstay on the annual garden tour for many years. Bluebird Farm is a favorite stop for many taking the tour each summer.

Being part of the Garden Tour means a lot of hard work and we appreciate the Macy's contribution to the Frontier Country Museum.



NORMAN ROCKWELL COLLECTOR PLATES

Frontier Country Museum has received a donation of 12 Norman Rockwell Collector plates from **Rosemary Shriver**. This is the **REDISCOVERED WOMEN COLLECTION** which was issued from 1981 through 1984.

Shortly after Rockwell's death in November 1978, the Rockwell Society of America began cataloging seventy years of Rockwell art. In doing so, they uncovered a series of paintings portraying women, painted between 1918 and 1930, that have been issued as fine china collector's plates—the Rockwell's Rediscovered Women Collection.

Through these portraits of women, we can see the enduring values of womanhood.

These beautiful plates, painted by one of America's most gifted artist of the twentieth century, will be available in our museum gift shop for \$30.00 each. Each plate sold will come with a certificate of authenticity with it's own registration number.



A sampling of the "Rediscovered Women Collection" plates donated by Rosemary Shriver.

SUMMER YARD MAINTENANCE

We have been fortunate to have Rob Wilson taking care of yard maintenance this summer. Rob mowed weekly through most of August, but we are now looking for more volunteers to help **George Voskuhl** finish the mowing season. Rob and George have done a great job of keeping the grounds looking good all summer long.

Thanks to **John Anderson, Charley Ball, Bob Howard** and **Roy Nowell** for taking care of weed control around our highway signs and for maintenance work on our sidewalks and porch.



POKER RUN MAKES FIRST STOP AT MUSEUM

On Saturday, August 29, a large group of motorcycles pulled onto the Frontier Country Museum grounds as their first stop of the **2015 Knights on Bikes Love Run**.

This event was held to raise funds for the Center of Family Love (CFL) in Okarche and is a project of the Knights of Columbus. The Poker Run began in Okarche and the bikers and support vehicles traveled North on Highway 81 then turned East on the Dover/Crescent road. They arrived at the museum just before 11 a.m. to pick up their card. The group's break allowed them to stretch their legs, visit for a while and grab a bottle of cold water furnished by the museum staff. Some of the guests took a quick tour through the museum and said they would be interested in bringing a group back to spend more time touring our facility.

After leaving the museum they headed to Lucille's in Mulhull, then Arcadia and on to the Thunder Road House near Western and Memorial Road for their final stop on the run.

We would like to thank **John Anderson** for furnishing the bottles of water, and **Sandra Voskuhl** and **Vickey Howard** for icing them down for them.



Bikers check in to pick up their card during their stop on the Knights on Bikes Love Run



CRESCENT EXHIBIT

We have recently moved our Crescent exhibit to the front of the museum. Crescent residents have donated boxes of articles from the Logan County News covering events and people in the community over the years.

These articles are generally from the 1930's through the 1980's and provide interesting tidbits about residents and events over the years. Many visitors come into the museum looking for more information about relatives or friends who lived in Crescent long ago. This collection provides them with a glimpse into the past and a chance to find some of the information they are seeking.

We also have volumes of Crescent High School yearbooks dating back to 1917. We have a few yearbooks from the 1920's

and a more complete set from 1946 through 2001 (with the exception of 1992 and 1993). We would love to complete our collection, so if you have old yearbooks you would like to donate, please contact a volunteer at the museum.

We have two volumes of Logan County Oklahoma which contain personal and genealogical history of Logan County families and information about the county and its communities.

We also have a variety of mementos from Crescent's past.

If you have some time on your hands, come in and browse thru these old articles - you will recognize many of the people and events, past school activities, marriages and obituary's throughout Crescent's past century.

THANK YOU ROY

Special thanks to **Roy Nowell** for replacing a row of floor tiles in the gift shop. There was an ever widening crack in the floor (most likely worsened by the earthquake).

Roy took out and replaced several damaged tiles.

Good job Roy.

DOCENTS WANTED

WE NEED YOUR HELP

SHIFTS MAY BE TAILORED
TO MEET YOUR SCHEDULE
VOLUNTEER FOR
AS LITTLE AS
3 HOURS/WEEK

IF INTERESTED
PLEASE CALL
969-3660

FRONTIER COUNTRY MUSEUM



FRONTIER COUNTRY HISTORICAL SOCIETY

500 N. GRAND

P. O. BOX 856

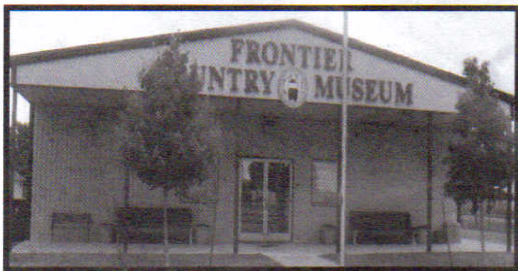
CRESCENT, OK. 73028

Phone: 405-969-3660

www.frontiercountrymuseum.org



~~Amy Loch/Mark Janzen~~
~~1001 E. Warner Ave~~
~~Guthrie, Ok 73044~~



Notes from our president

- ◆ Election of officers for 2016 at October Board meeting .
- ◆ Tour packets being assembled to advertise museum.
- ◆ New hot water heater installed to replace original.
- ◆ Thanks to **Roy Nowell** and **Joe Kegin** for replacing the light bulbs.
- ◆ Mark your calendar to remember the Christmas parade which starts from the museum on December 5.
- ◆ Thanks to **Amy** for hooking up new computer and connecting all cables.



Sandra Voskuhl

President

MUSEUM HOURS

TUESDAY — FRIDAY 10:00—4:00

SATURDAY, SUNDAY & MONDAY

BY APPOINTMENT ONLY

Phone: (405) 969-3660

e-mail: frontiercountrymuseum@gmail.com

NOTICE

The Quarterly Board Meeting
will be held

October 1, 2015

in the

Shiloh Primitive Baptist Church
Fellowship Hall

at 7:00 P. M.

Refreshments will be served
after the meeting.