

FRONTIER COUNTRY MUSEUM



Vol. 5 No. 1

Crescent, Oklahoma

March 2014



PIONEER DAY CELEBRATION COMING TO MUSEUM IN APRIL

Frontier Country Historical Society is excited to team with the Crescent Elementary School in hosting a **Pioneer Day** celebration on April 25. About 65 third graders will participate in this all-day event.

Activities begin at 8:30 with the students rotating through various activities including: classes at the school house, museum tours, lessons from the "Pioneer Woman", food preservation and preparation and quilting.

At 11:30, students will line up in preparation for the land

run. At 11:40, a shot will be fired to begin the run and students will stake their land and file their claim at the land office. They will eat lunch before an exhibition by the "Guthrie Gunfighters".

Afternoon activities will include such events as square dancing, Native Amer-

ican games, wagon rides, cow milking, making butter, roping, making rag dolls and other fun and educational demonstrations and events. The day will conclude around 2:30.

Extra volunteers will be needed to help with the activities of the day. If you can help with this pioneer day celebration, please contact Sandra Voskuhl so she can complete the schedule.

MARCH/APRIL VISITING ARTIST DISPLAY

The March/April Visiting Artist Exhibit now on display features the artwork of students at **Crescent High School**. This year we have six students exhibiting their works in various medium. The students are: **Cheraki Chilton, Megan Scott, Mayra Orozco, Mallory Forsgren, Chastidy Scott and Sammy Smith**. These young people are very talented and we are fortunate to have them display their work at the museum. Each year, a new group of young artists are developing their talent under the direction of Crescent High School art instructor, **Kristi Lovett**.



CRESCENT HIGH SCHOOL
Home of the Tigers



A sampling of the high school students artwork.



Masks created by high school art students.

Museum volunteers will host a reception for the student artists on

Sunday, April 6th
2:00 to 4:00 p.m.

During this event, the judges will present awards for outstanding works. We hope you will reserve this time to come by the museum, view the artwork and visit with these young artists.



"It is always interesting to see what our high school students are working on in their art classes."



PANCAKE SUPPER FUNDRAISER



The Frontier Country Museum held their annual pancake supper at the **Okie Cafe** on February 27. We want to thank **Elaine Simpson** for allowing us to hold the pancake supper at the cafe again this year.

This event is our major fundraiser and is co-sponsored by the **Crescent Masonic Lodge**. The pancake supper was well attended and everyone enjoyed all the pancakes and sausage they could hold. Not only was the food very

tasty, but everyone enjoyed visiting with friends and neighbors. The museum is using part of the funds donated to replace the floor covering in the Shiloh Primitive Baptist Church Fellowship Hall. The remaining donations will go toward the daily operations of the museum and grounds. We enjoyed working with the Masons and appreciate their donation and their support in making this a very successful event.



Large crowds of customers keep the volunteers busy throughout the evening.



Guests enjoy the pancakes and sausage at the Okie Cafe.

☞ Museum Volunteers ☜

Volunteering to work at the museum provides a wonderful opportunity to serve your community and to enjoy meeting new people. Museum hosts are asked to work a three hour shift one day a week alongside a museum staff member. It is the volunteer's responsibility to greet visitors and to monitor the gift shop area. If you are interested in becoming a museum volunteer, please call the museum office at 969-3660. ☎



MATCHING GRANT

We have received notice that our application for a matching grant has been accepted by the Kirkpatrick Family Fund. We had submitted an application earlier in the year and they have approved a matching grant in the amount of \$5,000 for the Frontier Country Historical Society to build our Charitable Organization Endowment Fund at the Oklahoma City Community Foundation.

Thanks to John Anderson and Carol Oltmanns for filling out and submitting the application.

2014 MEMBERSHIP DRIVE CONTINUES

The 2014 membership drive has brought in over 90 memberships and we are still hoping to increase this number. If you have not yet sent in your membership or renewal, we urge you to do so as soon as possible. The revenue from memberships is essential in funding the operation of the museum.

Thanks to your support and the help of faithful volunteers, we are able to

open the museum six days a week. The membership dues and donations are the main source of funding the operations of the museum, including utilities and improvements.

If you would like to join or renew your membership and need a new form, please call the museum at 969-3660 and we will see that you get a copy.



CHECK OUT OUR WEBSITE

WWW.FRONTIERCOUNTRYMUSEUM.ORG

Website design: Marv Hawkins

Assisted by Dale Orcutt and Carol Oltmanns



GIRL SCOUT TROOP 738 HOLDS MEETING AT MUSEUM

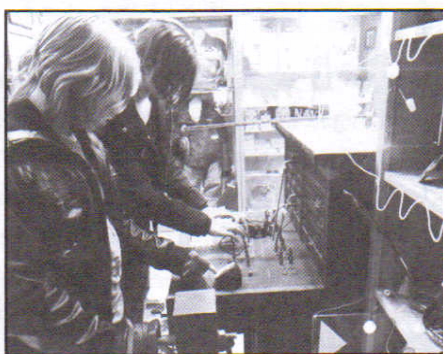


Girl scouts check out exhibits inside the museum.



If only the sodas were real!

Crescent Girl Scout Troop 738 took advantage of Frontier Country Museum's free admission in December to hold their weekly meeting at the museum. We were delighted to welcome the scout troop and we hope to have them visit again soon.



Operator. Number please.



Lessons in the old schoolhouse.



The scouts enjoy 'recess' by the schoolhouse.

Pioneer telephone cooperative

Representatives of Pioneer Telephone met at the museum on March 14 to present a donation of \$500 to Frontier Country Museum. Cindy Gore (from the Kingfisher office), Cheri Clark and Rodney Kochenower (of the Crescent office), and Joe Kegin (who represents the Crescent

District on the Board of Trustees) presented the check to museum president Sandra Voskuhl and treasurer, John Anderson. Pioneer Telephone has been very generous with donations of money, time and equipment in helping the museum with various projects over the past ten years. We appreciate their support and look forward to working with them in the future.



Sandra Voskuhl, Cheri Clark, John Anderson, Joe Kegin and Rodney Kochenower

Museum Memorials

The following names have been added to the museum's Memorial Book.

Bill Jacobs
Hazel Owens
Eva Gregory

To make a donation in memory of a loved one, please contact the museum staff at 969-3660.

MARILYN TALLEY
FRONTIER COUNTRY MUSEUM
VOLUNTEER OF THE YEAR



Marilyn Talley was chosen Frontier Country Museum Volunteer of the Year

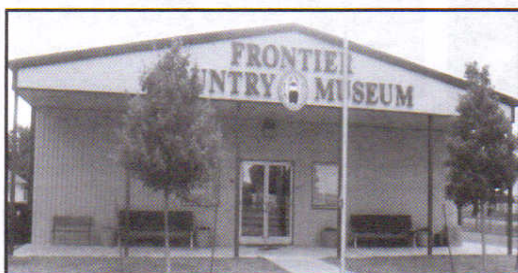
FRONTIER COUNTRY MUSEUM



President.....Sandra Voskuhl
Vice President.....Tom Williams
Secretary.....Carol Oltmanns
Treasurer.....John Anderson

FRONTIER COUNTRY HISTORICAL SOCIETY

500 N. GRAND
P. O. BOX 856
CRESCENT, OK 73028
Phone: 405-969-3660
www.frontiercountrymuseum.org



Notes from our president

- ◆ Meet and Greet the High School artists from 2—4 on Sunday, April 6.
- ◆ A special thank you to **Elaine Simpson** for allowing the museum to hold the annual Pancake Supper at the **Okie Cafe** in downtown Crescent, and for helping the volunteers during the event.
- ◆ Also, thanks to all the museum **volunteers** that came out to help at the Pancake Supper.
- ◆ If you haven't renewed your membership yet, please take time to do it right away.
- ◆ Museum volunteers are still needed. Apply at the museum. **969-3660**
- ◆ May/June Visiting Artist Exhibit — **Shirley Tubbs**. Come check it out.



Sandra Voskuhl
President

INSIDE THIS ISSUE:

Pioneer Day Celebration	1
High School Art Show	1
Pancake Fundraiser	2
Matching Grant Approved	2
Girl Scout Troup 738	3
Tours museum	
Pioneer Telephone check presentation	3

FRONTIER COUNTRY HISTORICAL MUSEUM ON FACEBOOK

Did you know that in addition to having it's own web site, www.frontiercountrymuseum.org, the museum is also on Facebook. **Dale Orcutt** updates the information on a regular basis. The site includes museum hours, closings, special events, pictures of museum exhibits and visiting artist displays. It also contains links to other museums and items of interest in this area.

NOTICE

The Quarterly Board Meeting
will be held

April 3, 2014

in the

**Shiloh Primitive Baptist Church
Fellowship Hall**

at 7:00 P. M.

Refreshments will be served
after the meeting.